



Advice line: 0845 260 7260 www.kingspan-renewables.co.uk

CODE	DESCRIPTION	PART NO	PRICE £
TANKS			
Circular Tanks PG.89			
266325	PC25C Polyethylene		108.25
266327	PC50C Polyethylene		149.44
266329	PC100C Polyethylene		411.99
Circular Lids PG.89			
266351	CL25 to suit PC25C		58.29
266353	CL50 to suit PC50C		30.33
266355	CL100 to suit PC100C		132.15
Rectangular Tanks PG.89			
266301	PC4R		18.25
266302	PC15R		90.42
266303	PC20R		91.41
266304	PC25R		116.74
266305	PC40R		225.21
266306	PC50R		209.91
266313	K4R		25.05
266315	K20R		115.41
266316	K25R		144.66
Rectangular Lids PG.89			
266341	RL4 to suit PC4R/K4R		15.42
266342	RL15 to suit PC15R/K15R		40.72
266343	RL20 to suit PC20R/K20R		48.08
266344	RL25 to suit PC25R/K25R		53.23
266345	RL40 to suit PC40R/K40R		87.48
266346	RL50 to suit PC50R/K50R		92.19
Rectangular Cisterns PG.89			
<i>Low Level Tank + 2 Lids</i>			
266361	LT40		722.99
266362	LT50		461.91
266363	LT100		794.01
Cistern			
266368	FCGR09, 25 x 17 x 15		157.98
266369	FCGR10, 20 x 15 x 18		128.68
266370	FCGR11, 18.5 x 18.5 x 18.5		137.20
266371	FCGR12, 24 x 12 x 20		160.24
266373	FCGR15, 26 x 19 x 18		131.93
266374	FCGR18, 26 x 19 x 20		148.02
266376	FCGR21, 25 x 16 x 25		148.71
Byelaw 30 Kits PG.89			
266396	BK4R for PC4R/K4R		50.23
266397	BK15R for PC15R/K15R		86.20
266398	BK20R for PC20R/K20R		94.81
266399	BK25R for PC25R/K25R		102.12
266400	BK40R for PC40R/K40R		136.90
266401	BK50R for PC50R/K50R		152.14
266408	BK25C for PC25C		118.45
266410	BK50C for PC50C		121.52
266412	BK100C for PC100C		230.11
266446	BLKT40 for LT40		150.01
266447	BLKT50 for LT50		132.37
266448	BLKT100 for LT100		150.19



Ferham Rectangular Tank & Byelaw 30 Kit



Advice line: 01772 632 850 www.polytank.co.uk

CODE	DESCRIPTION	PART NO	PRICE £
TANKS			
Circular Tanks PG.423			
267081	C025		116.50
267083	C050		137.50
Rectangular Tanks PG.423			
267001	12 Gallon 20 x 12 x 20"		114.50
267003	12 Gallon 20 x 15 x 18"		114.50
267005	15 Gallon 24 x 12 x 20"		114.50
267007	15 Gallon 24 x 15 x 18"		114.50
267006	15 Gallon 24 x 17 x 17"		114.50
267098	15 Gallon 30 x 19 x 15"		89.00
267008	18 Gallon 24 x 12 x 24"		114.50
267009	18 Gallon 24 x 18 x 19"		114.50
267010	20 Gallon 20 x 20 x 20"		114.50
267011	20 Gallon 24 x 15 x 24"		114.50
267012	25 Gallon 27 x 20 x 20"		114.50
267099	25 Gallon 30 x 19 x 19"		99.00
267100	40 Gallon 46 x 24 x 17"		169.00
267016	42 Gallon 39 x 20 x 21"		181.50
267094	42 Gallon 46 x 19 x 19"		181.50
267021	50 Gallon 46 x 24 x 19"		181.50
267017	50 Gallon 36 x 24 x 23"		181.50
267101	50 Gallon 46 x 24 x 20"		171.00
Expansion Tanks PG.423			
267091	Tank & Lid 18 x 12 x 12"		37.00
267102	Tank Only X10/4		10.20
267103	Lid Only X10/4		4.95
Coffin Tanks PG.423			
267095	25 Gallon 55 x 20 x 12"		208.00
267018	50 Gallon 64 x 18 x 19"		240.00
267096	70 Gallon 64 x 24 x 19"		303.50
Combination Tanks PG.423			
267062	45 Gallon 23 x 23 x 34"		378.00
267063	50 Gallon 23 x 23 x 35"		342.00
Byelaw 30 Kits PG.423			
267097	By-law 30 Kit		11.55



Polytank Rectangular Tank



Advice line: 0118 969 1611 www.cistermiser.co.uk

CODE	DESCRIPTION	PART NO	PRICE £
FLUSH CONTROL VALVES			
235401	Standard Valve	STD	129.00
235402	Low Pressure Valve	LP	145.00
235403	High Sensitivity Low Pressure Valve	HSLP	239.00
235404	Infrared PIR Valve	IRC	219.00



Cistermiser IRC2

Torbeck®

Advice line: 01432 357 331 www.opella.co.uk

CODE	DESCRIPTION	PART NO	PRICE £
WC VALVES			
Torbeck Valves PG.277			
135380	Side Inlet Valve	B610	9.63
135381	Adjustable Bottom Inlet Valve from 8 1/2" - 11 1/2" Height	B661AT	14.02
Delchem Valves PG.277			
135382	Adjustable Arm Bottom Inlet Valve 8 1/2" Upstand	B704A	4.82
135383	Adjustable Arm Bottom Inlet Valve 9 1/2" Upstand	B706A	4.82
135384	Adjustable Arm Side Inlet	B801A	3.17
Torbeck Ecofil Valves PG.277			
135385	Side Inlet Valve	B670-ECO	10.68
135386	Adjustable Bottom Inlet Valve from 8 1/2"-11 1/2" Height	B671AC-ECO	16.80
Torbeck Dual Flush Valves PG.277			
135387	Variflush 1.5" Outlet	ADP301	14.77
135388	Variflush 2" Outlet	ADP302	14.77
Dualflush Siphons PG.277			
135391	Delchem 8"	DFA08025	5.67
135392	Delchem 9.5"	DFA09525	5.67

Opella Plumbing Innovations

The leading manufacturer of flushing products

All products are made in the UK



Advice line: 01525 850 000 www.grundfos.co.uk

CODE	DESCRIPTION	PART NO	NEW LIST PRICES EFFECTIVE OCTOBER 2016
MACERATORS			
Sololift2			PG.149
115814	WC-1	97775329	569.00
115815	WC-3	97775330	739.18
115816	CWC-3	97775331	704.39
115817	C-3	97775332	586.63
115818	D-2	97775333	468.67



Grundfos Sololift2



PLUMBING THE POSSIBILITIES

Advice line: 0208 842 0033 www.saniflo.co.uk

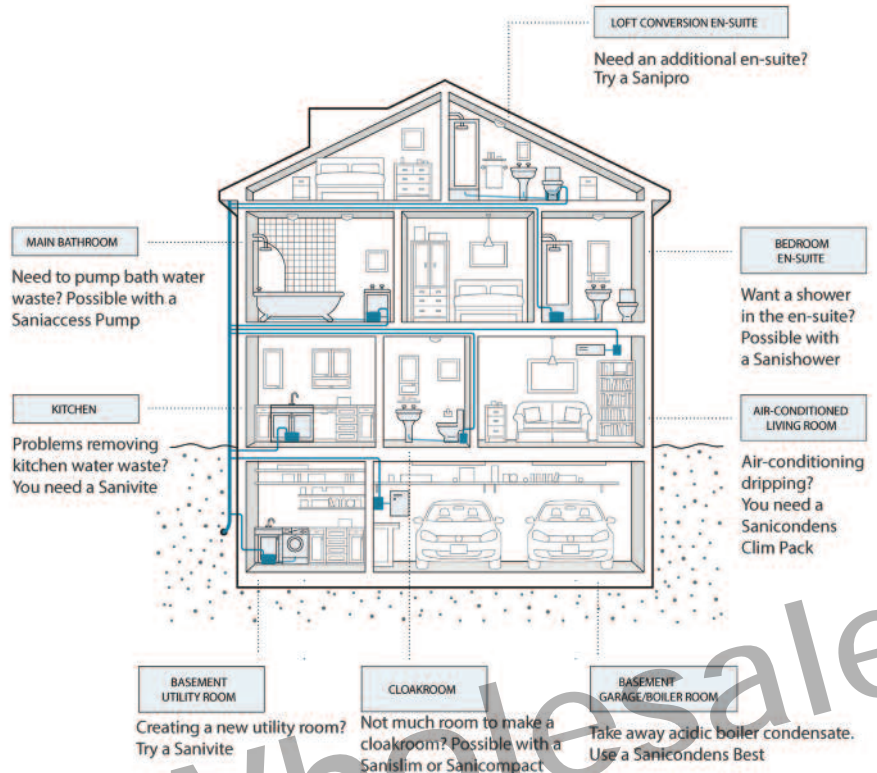
CODE	DESCRIPTION	PART NO	NEW LIST PRICES EFFECTIVE OCTOBER 2016
PUMPING SYSTEMS			
Domestic Range			
			PG.143
381000	Saniflo		441.34
381001	Sanitop		521.28
381002	Saniplus		699.95
381003	Sanivite		529.79
381005	Sanishower		393.36
381006	Sanipro		610.32
381010	Sanipack		610.90
381008	Sanislim		615.23
381009	Sanicompact		745.96
381024	Saniwall		868.83
381018	Sanicondens Best		119.13
381027	Sanicondens Mini		88.17
381029	Sanicondens Pro		100.54
381030	Sanishower Flat		393.42
381033	Sanifloor 1 with Waste for Tiled Floor		508.95
381034	Sanifloor 2 with Waste for Vinyl Floor		508.95
381035	Sanifloor 3 with Waste for Trays		462.53
Descaler			
			PG.143
381015	Descaler 1 x 5ltr		24.04
Alarm			
			PG.143
381017	Sanialarm		31.96
Commercial Range			
			PG.143
381025	Sanibest Pro		792.60
381011	Sanispeed		633.39
381012	Sanicom1		941.74
381023	Sanicom 2 Heavy Duty Pump		1442.86
381016	Sanicubic2 Pro		2085.20
381028	Sanicubic1		1283.93
381021	4in Isolating Valve		150.53
381022	2in Isolating Valve		125.30
381036	Sanicubic XL		2312.68



Saniflo Sanivite

SANIFLO®

PLUMBING THE POSSIBILITIES



Add the luxury of extra facilities almost anywhere you choose

Domestic Range Product Selector

All of our units can be used in any of these situations: Basement, Ground Floor, Upper Floor, Loft/Attic — just choose the right product for your installation...

	SANIFLO Ref 1001	SANISLIM Ref 1054	SANITOP Ref 1002	SANIPRO Ref 1006	SANIPACK Ref 1052	SANISHOWER Ref 1043/2	SANIPLUS Ref 1003	SANIVITE Ref 1004	SANICOMPACT ³ Ref 1081	SANIWALL Ref 110	SANISHOWER FLAT Ref 1043/3
WC	•	•	•	•	•	•	•	•	•	•	•
Wall-hung WCs					•					•	
Wash Basin		•	•	•	•	•	•	•		•	•
Bath								•			
Shower		•		•	•	•	•			•	•
Power Shower				•	•		•			•	
Bidet		•		•	•	•	•			•	
Washing Machine								•			
Dishwasher								•			
Sink								•			
Alarm ¹	•	•	•	•	•	•	•	•		•	

Pumps up (metres)	5	2.5	5	5	5	4	5	5	3	5	3
Pumps along (metres)	100	40	100	100	100	40	100	50	30	100	20

¹ Sanialarm can be fitted to these units if required.
³ Sanicompact can be installed in locations with a minimum water supply pressure of 1.7 bar.

www.saniflo.co.uk



Tel: 01531 630 068 www.davant.co.uk

CODE DESCRIPTION PART NO PRICE £

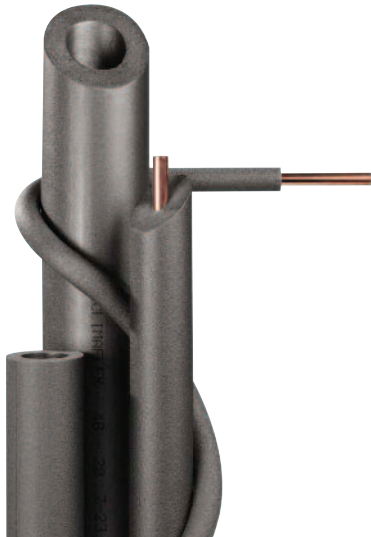
INSULATION

Pipe Insulation		PG.70
176020	15mm x 9mm x 1m Length	0.66
176021	22mm x 9mm x 1m Length	0.93
176022	28mm x 9mm x 1m Length	1.07
176023	15mm x 9mm x 2m Length	1.23
176024	22mm x 9mm x 2m Length	1.73
176025	28mm x 9mm x 2m Length	1.98
176026	35mm x 9mm x 2m Length	2.44
176027	42mm x 9mm x 2m Length	2.77
176028	54mm x 9mm x 2m Length	4.44
176029	15mm x 13mm x 1m Length	0.82
176030	22mm x 13mm x 1m Length	1.07
176031	28mm x 13mm x 1m Length	1.32
176032	15mm x 13mm x 2m Length	1.48
176033	22mm x 13mm x 2m Length	2.00
176034	28mm x 13mm x 2m Length	2.35
176035	35mm x 13mm x 2m Length	2.90
176036	42mm x 13mm x 2m Length	3.25
176037	54mm x 13mm x 2m Length	4.70
176038	15mm x 19mm x 2m Length	3.32
176039	22mm x 19mm x 2m Length	4.07
176040	28mm x 19mm x 2m Length	4.69
176041	15mm x 25mm x 2m Length	5.89
Pipe Insulation		PG.427
Armaflex - Class '0'		
176042	15mm x 13mm x 2m Length	4.45
176043	22mm x 13mm x 2m Length	5.40
176044	28mm x 13mm x 2m Length	6.33
176045	35mm x 13mm x 2m Length	6.80
176046	42mm x 13mm x 2m Length	8.01
176047	54mm x 13mm x 2m Length	11.08
176048	15mm x 19mm x 2m Length	7.03
176049	22mm x 19mm x 2m Length	8.52
176050	28mm x 19mm x 2m Length	11.48

With an extended range of copper tube...

Is there a need to go anywhere else?

Wednesbury Copper Tube
Made in the UK



Davant Pipe Insulation

Contact your F & P Account Manager for the current prices

WE SIMPLY DELIVER MORE

CONSUMABLES

CODE	DESCRIPTION	NET PRICE	NET PRICE
SUNDRIES			
Boss White Jointing Compound			
135395	Boss White 400g	Carton of 10	PG.199 POA
Smoke Matches & Pellets			
135602	Smoke Matches	Box of 12	PG.199 POA
135603	Smoke Pellets 13gm	6 Per Tube	POA
Gas Leak Detector			
135604	Gas Leak Detector	400ml	PG.199 POA
Silicone Spray			
135605	Silicone Spray	400ml	PG.199 POA
Freezer Kits			
135600	Freezer Kit	Regular	PG.199 POA
135601	Freezer Kit	Jumbo	POA
Mortar Mix			
278005	Mortar Mix	5kg	PG.199 POA
Limestone Chippings			
135432	10mm Limestone	25kg	PG.141 POA

Proconsumables

CODE	DESCRIPTION	NET PRICE	NET PRICE
SEALANTS & ADHESIVES			
		£ Each	£ Each
Pro Sanitary Sealant			
		Individual Items	Complete Boxes
			PG.199
336300	White, 300ml	12/Box	POA
336301	Clear, 300ml	12/Box	POA
336303	Solvent Free 300ml	12/Box	POA
TAPES			
			£/Box
Pro PTFE Tape			
135450	12mm x 12mtr		PG.199
	WRAS Approved	Box of 250	POA
SUNDRIES			
			£/Each
Pro Repair Box			
135500	Pro Repair Box		PG.199 POA



Advice line: 0121 704 2324 www.brianhyde.co.uk

CODE	DESCRIPTION	PART NO	NET PRICE
FLUX			
			PG.335
224002	LA·CO	125g	POA
224001	LA·CO	475g	POA



LA·CO Flux



Tel: 0330 100 7750 www.fernox.com



Advice line: 01277 633 200 www.wisemangroup.co.uk

CODE	DESCRIPTION	PART NO	PRICE £
CONSUMABLES			
Flux			
			PG.398
262015	Fluxite Paste	450g 20423	21.29
262011	Powerflow Flux	350g 20436	13.52
262012	Powerflow Flux	100g 20437	7.18

CODE	DESCRIPTION	PART NO	NET PRICE
FLUX			
			PG.335
224051	Everflux	80ml	POA
224052	Everflux	250ml	POA
224050	Everfree Organic Drain Cleaner	1ltr	POA
224053	Everflux Brush'n'Tub	125ml	POA



Consumables



Powerflow Flux



Everflux